

TEST REPORT

Client: Hangzhou New Asia International Co., Ltd.

Address: 189 FengQi East Road, TSN Plaza 4-706, Hangzhou, 310020, China

1. SAMPLE DESCRIPTION

Product Name	Cranberry Extract
Batch Number	CBE-160505
AIE Number	16060303
Sample Package	PE bag
Sample Appearance	Dark purple powder
Sample Received	2016.06.03
Start of Analysis	2016.06.03
End of Analysis	2016.06.13

Report Authorization:



Vincent Huang – Quality and Technical Director

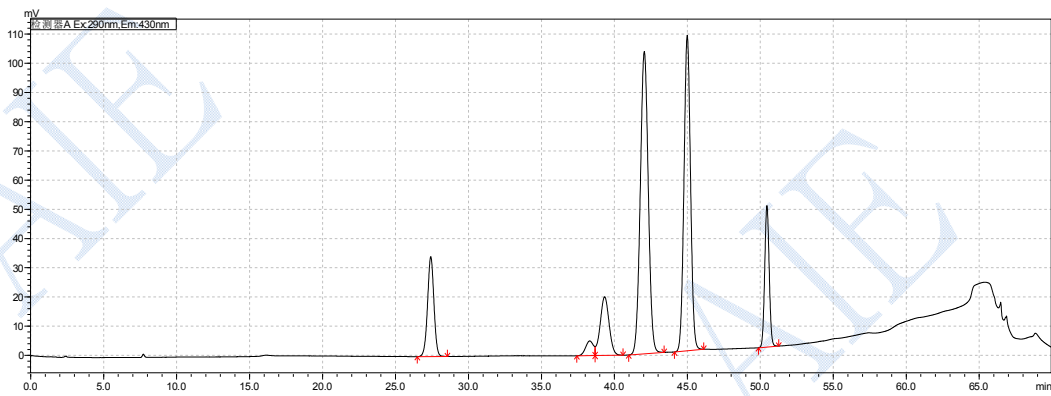
Date: 2016.06.14

2. RESULTS

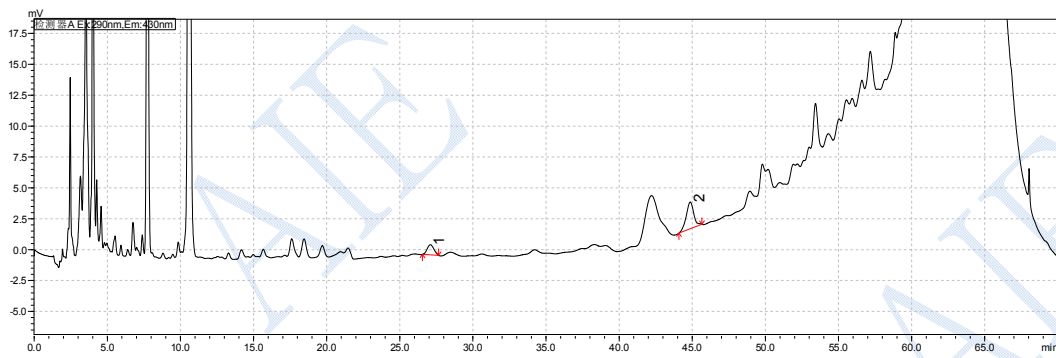
Test Items		Results	Units	Methods
Heavy Metals	As	0.06	ppm (mg/kg)	ICP-MS
	Pb	0.039	ppm (mg/kg)	
	Cd	ND (<0.005)	ppm (mg/kg)	
	Hg	ND (<0.005)	ppm (mg/kg)	
Microbiological Testing	Total Plate Count	<10	cfu/g	USP
	Mold	10	cfu/g	
	Yeast	<10	cfu/g	
Nutritional Information	Protein	2.3	g/100g	USP
	Fat	2.7	g/100g	
	Carbohydrates	90.6	g/100g	
	Energy	395.9	Kcal/100g	
PAHs	Benzo(a)anthracene	ND (<1)	ppb (μ g/kg)	SPE-HPLC-FLD
	Benzo(b)fluoranthene	1.1	ppb (μ g/kg)	
	Benzo(a)pyrene	1.5	ppb (μ g/kg)	
	Chrysene	ND (<1)	ppb (μ g/kg)	

3. CHROMATOGRAMS OF PAHS

Standard



CBE-160505



4. SAMPLE PICTURE

